



EHH ARCHITECTS INC

## EHH ARCHITECTS INC

P O Box 7295  
Roggebaai  
8012

Satbel Centre  
2 De Smidt Street, Green Point  
8005 Cape Town

Tel: +(27)+(021) 4197760  
Fax: +(27)+(021) 425 2608  
E-mail: [mdtottle@ehharch.com](mailto:mdtottle@ehharch.com)  
Web: [www.ehharch.com](http://www.ehharch.com)

### PRESENT PRINCIPALS

Mervyn Dight Tottle Pr. Arch, Pr.CPM, MI.Arch, CIA (Managing Director)  
Emanuel Adams Pr.S.Arch.T., CIA (Director)  
Renato Graça B.Arch (UPE) Pr. Arch  
Ernest Patrick Harper B.Arch. (UCT), MIA, ARCH. (SA) (Consulting)

Cell: 082 900 8059  
Cell: 083 325 6954  
Cell: 082 781 7755

### REGISTRATION WITH PROFESSIONAL ASSOCIATIONS/INSTITUTES

South African Institute of Architects  
Cape Institute for Architecture  
South African Council for the Architectural Profession (SACAP)  
South African Property Association (SAPOA)  
The SA Council for the Project & Construction Management Professions (SACPCMP)  
South African Federation of Hospital Engineering  
South African Black Technical Allied Careers Association (SABTACO)  
Western Cape Business Opportunities Forum (WECBOF)

### HISTORY & PHILOSOPHY

Edge Harper Hook Architects was founded in 1963 in Cape Town and expanded to George and Outshoom and restructured in 2003 as EHH Architects Inc.

The firm is structured to handle a diverse scale and variety of projects and has acquired considerable expertise in running large fast-track projects with full management services to its clients.

From its inception in 1963 EHH has steadily grown to become a major practice. We believe that this growth is due to our dedication to service and the value placed on long-term relationships. Our high client return rate is a testimony of our experience and performance.

During the last 45 years certain very important principles have been firmly entrenched in the day-to-day running of the practice. Apart from the constant striving for competence, professionalism, honesty and integrity that one would expect, a strong policy of non-discrimination in respect of race, gender, religion and physical handicap has rigorously been applied.

Successful architectural projects are the result of many factors, but none is more fundamental than a willingness to listen and respond to clients' needs and aspirations.

The EHH business philosophy emphasises performance in the achievement of client goals. The effective and deliberate application of this philosophy has resulted in an ability to consistently deliver projects that are well designed, competently executed, completed within budget and on schedule.

The enhanced speed, accuracy and completeness of the production of construction documentation afforded by our extensive use of computers and management skills affords us more freedom to perform our creative functions and the time to find appropriate architectural solutions to meet our clients' needs.

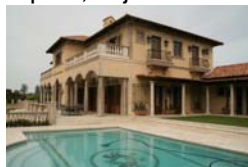
### SOME RESIDENTIAL PROJECTS UNDERTAKEN

The Breakers luxury apartments, Cape Town  
Belvidere Estate, Knysna – Design guidelines manual  
Fynbos Village at Pinnacle Point, Mossel Bay  
De Werf at De Wijnlanden, Stellenbosch (W Cape)  
Protea Pines housing, Brackenfell, Cape Town  
Private residence, Belvedere Estate, Cape Town  
Private residence, Avignon Estate, Hout Bay, CT  
The Orangerie luxury apartment complex, adjacent to the Mount Nelson Hotel, Gardens, Cape Town

St. Tropez townhouse complex, Hout Bay, Cape Town  
CPI House, Offices & loft apartments, Cape Town  
Golf Villas, 26 block of luxury villas, Pinnacle Point  
Various houses, Klein Karoo, Southern & Western Cape  
Private residence, Tuscan Villa, Durbanville, Cape Town  
Via Firenze residential complex, Parklands, Cape Town  
Sol Kerzner's residence at Leeukoppie – documentation



The Breakers luxury  
Apartments, Cape Town



Private Residence, Tuscan  
Villa, Durbanville, CT



Luxury Golf Villas, Pinnacle  
Point, Mossel Bay



Via Firenze residential  
complex, Parklands, CT